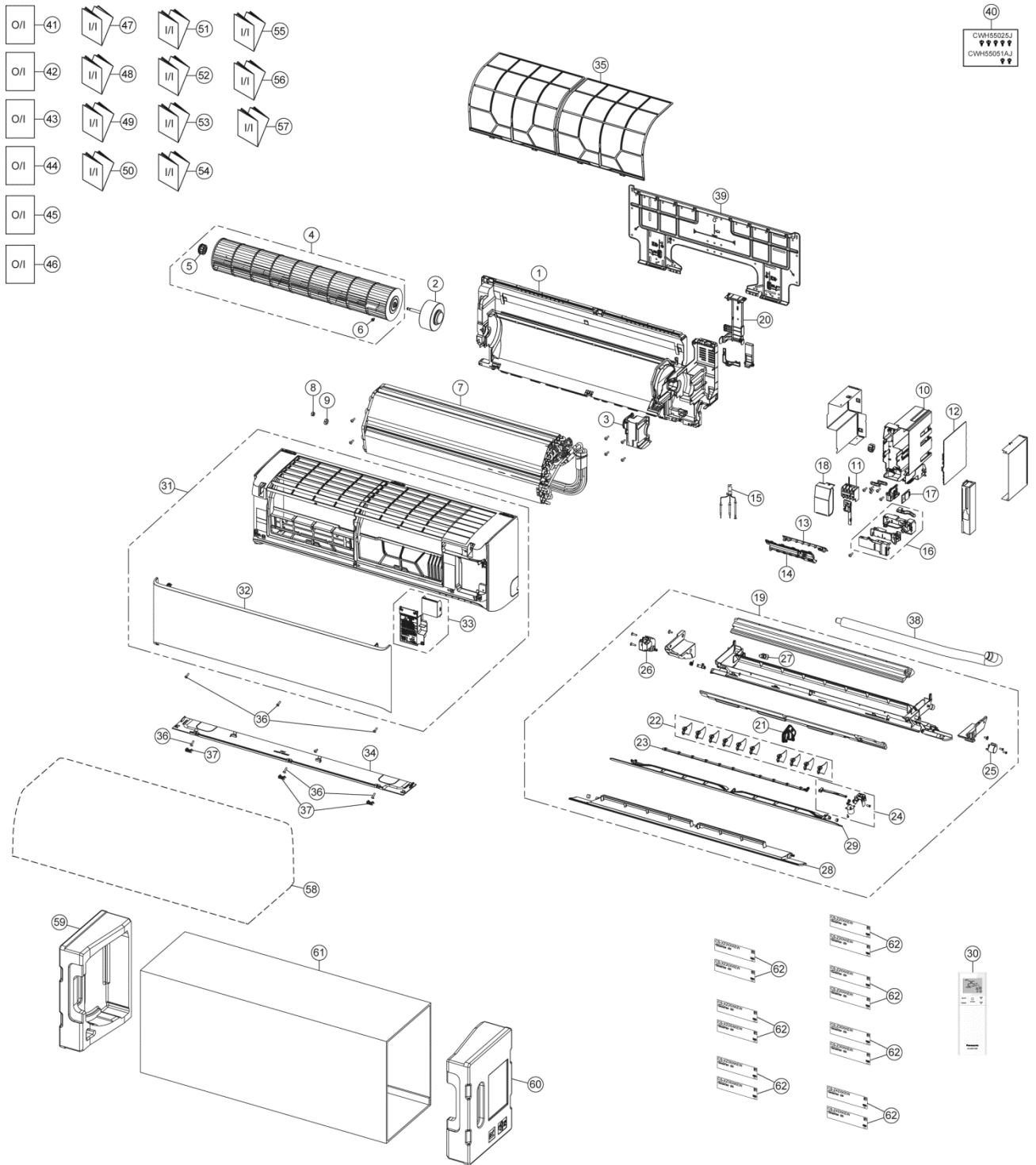


22. Exploded View and Replacement Parts List

22.1 Indoor Unit



Note
The above exploded view is for the purpose of parts disassembly and replacement.
The non-numbered parts are not kept as standard service parts.

| SAFETY | REF. NO. | PART NAME & DESCRIPTION | QTY. | CS-XZ35XKEW | REMARK |
|--------|----------|-----------------------------------|------|---------------|--------|
| | 1 | CHASSIS COMPLETE | 1 | ACXD50C04190 | |
| ⚠ | 2 | FAN MOTOR | 1 | L6CBYYL0306 | O |
| | 3 | FAN MOTOR BRACKET | 1 | ACXD54-04360 | |
| | 4 | CROSS-FLOW FAN COMPLETE | 1 | ACXH02C01330 | |
| | 5 | BEARING ASSY | 1 | CWH64K1010 | |
| | 6 | SCREW - CROSS-FLOW FAN | 1 | CWH551146 | |
| | 7 | EVAPORATOR | 1 | ACXB30C32570 | |
| | 8 | FLARE NUT (LIQUID) | 1 | CWT251048 | |
| | 9 | FLARE NUT (GAS) | 1 | CWT251049 | |
| | 10 | CONTROL BOARD CASING | 1 | ACXH10-08620 | |
| ⚠ | 11 | TERMINAL BOARD COMPLETE | 1 | ACXA28C05900 | O |
| ⚠ | 12 | ELECTRONIC CONTROLLER - MAIN | 1 | ACXA73C72480 | O |
| ⚠ | 13 | ELECTRONIC CONTROLLER-INDICATOR | 1 | ACXA73-37110 | O |
| | 14 | INDICATOR HOLDER | 1 | ACXD93-22430 | |
| ⚠ | 15 | SENSOR COMPLETE | 1 | CWA50C3226 | O |
| ⚠ | 16 | GENERATOR COMPLETE | 1 | ACXH94C01420 | O |
| ⚠ | 17 | ELECTRONIC CONTROLLER-WIFI | 1 | ACXA73-28520 | O |
| | 18 | CONTROL BOARD TOP COVER | 1 | ACXH13-08680 | |
| | 19 | DISCHARGE GRILLE COMPLETE | 1 | ACXE20C06520 | |
| | 20 | BACK COVER CHASSIS | 1 | ACXD93-22420 | |
| | 21 | FULCRUM | 1 | ACXH62-00790 | |
| | 22 | VERTICAL VANE | 10 | ACXE24-04000 | |
| | 23 | CONNECTING BAR | 1 | ACXE26-02550 | |
| ⚠ | 24 | AIR SWING MOTOR ASSY | 1 | ACXA98K00220 | O |
| ⚠ | 25 | AIR SWING MOTOR | 1 | ACXA98-02420 | O |
| ⚠ | 26 | GEAR-COMPLETE | 1 | ACXH68C00520 | O |
| | 27 | CAP - DRAIN TRAY | 1 | CWH521259 | |
| | 28 | HORIZONTAL VANE COMPLETE - BIG | 1 | ACXE24C04960 | |
| | 29 | HORIZONTAL VANE COMPLETE | 1 | ACXE24C04970 | |
| ⚠ | 30 | REMOTE CONTROL COMPLETE | 1 | ACXA75C20670 | O |
| | 31 | FRONT GRILLE COMPLETE | 1 | ACXE10C13520 | |
| | 32 | INTAKE GRILLE COMPLETE | 1 | ACXE22K09880 | |
| | 33 | GRILLE DOOR COMPLETE | 1 | ACXE14C01430 | |
| | 34 | PARTICULAR PLATE | 1 | ACXD90K02220 | |
| | 35 | AIR FILTER | 2 | ACXD00-02990 | |
| | 36 | SCREW - FRONT GRILLE | 6 | XTT4+16CFJ | |
| | 37 | CAP - FRONT GRILLE | 3 | ACXH52-04000A | |
| | 38 | DRAIN HOSE | 1 | ACXH85-00210 | |
| | 39 | INSTALLATION PLATE | 1 | ACXH36-00840 | |
| | 40 | BAG COMPLETE - INSTALLATION SCREW | 1 | CWH82C1705 | |
| | 41 | OPERATING INSTRUCTION | 1 | ACXF55-29741 | |
| | 42 | OPERATING INSTRUCTION | 1 | ACXF55-29751 | |
| | 43 | OPERATING INSTRUCTION | 1 | ACXF55-29761 | |
| | 44 | OPERATING INSTRUCTION | 1 | ACXF55-30281 | |
| | 45 | OPERATING INSTRUCTION | 1 | ACXF55-30291 | |
| | 46 | OPERATING INSTRUCTION | 1 | ACXF55-30301 | |
| | 47 | INSTALLATION INSTRUCTION | 1 | ACXF60-42501 | |

| SAFETY | REF. NO. | PART NAME & DESCRIPTION | QTY. | CS-XZ35XKEW | REMARK |
|--------|----------|--------------------------|------|--------------|--------|
| | 48 | INSTALLATION INSTRUCTION | 1 | ACXF60-42511 | |
| | 49 | INSTALLATION INSTRUCTION | 1 | ACXF60-42521 | |
| | 50 | INSTALLATION INSTRUCTION | 1 | ACXF60-42531 | |
| | 51 | INSTALLATION INSTRUCTION | 1 | ACXF60-42541 | |
| | 52 | INSTALLATION INSTRUCTION | 1 | ACXF60-42551 | |
| | 53 | INSTALLATION INSTRUCTION | 1 | ACXF60-42561 | |
| | 54 | INSTALLATION INSTRUCTION | 1 | ACXF60-42571 | |
| | 55 | INSTALLATION INSTRUCTION | 1 | ACXF60-42581 | |
| | 56 | INSTALLATION INSTRUCTION | 1 | ACXF60-42591 | |
| | 57 | INSTALLATION INSTRUCTION | 1 | ACXF60-42601 | |
| | 58 | BAG | 1 | CWG861497 | |
| | 59 | SHOCK ABSORBER- LEFT | 1 | ACXG70-12960 | |
| | 60 | SHOCK ABSORBER - RIGHT | 1 | ACXG70-12970 | |
| | 61 | C.C.CASE | 1 | ACXG50-57100 | |
| | 62 | MODEL LABEL | 2 | ACXF85-63960 | |

(NOTE)

- All parts are supplied from PAPAMY, Malaysia (Vendor Code: 00029488).
- “O” marked parts are recommended to be kept in stock.